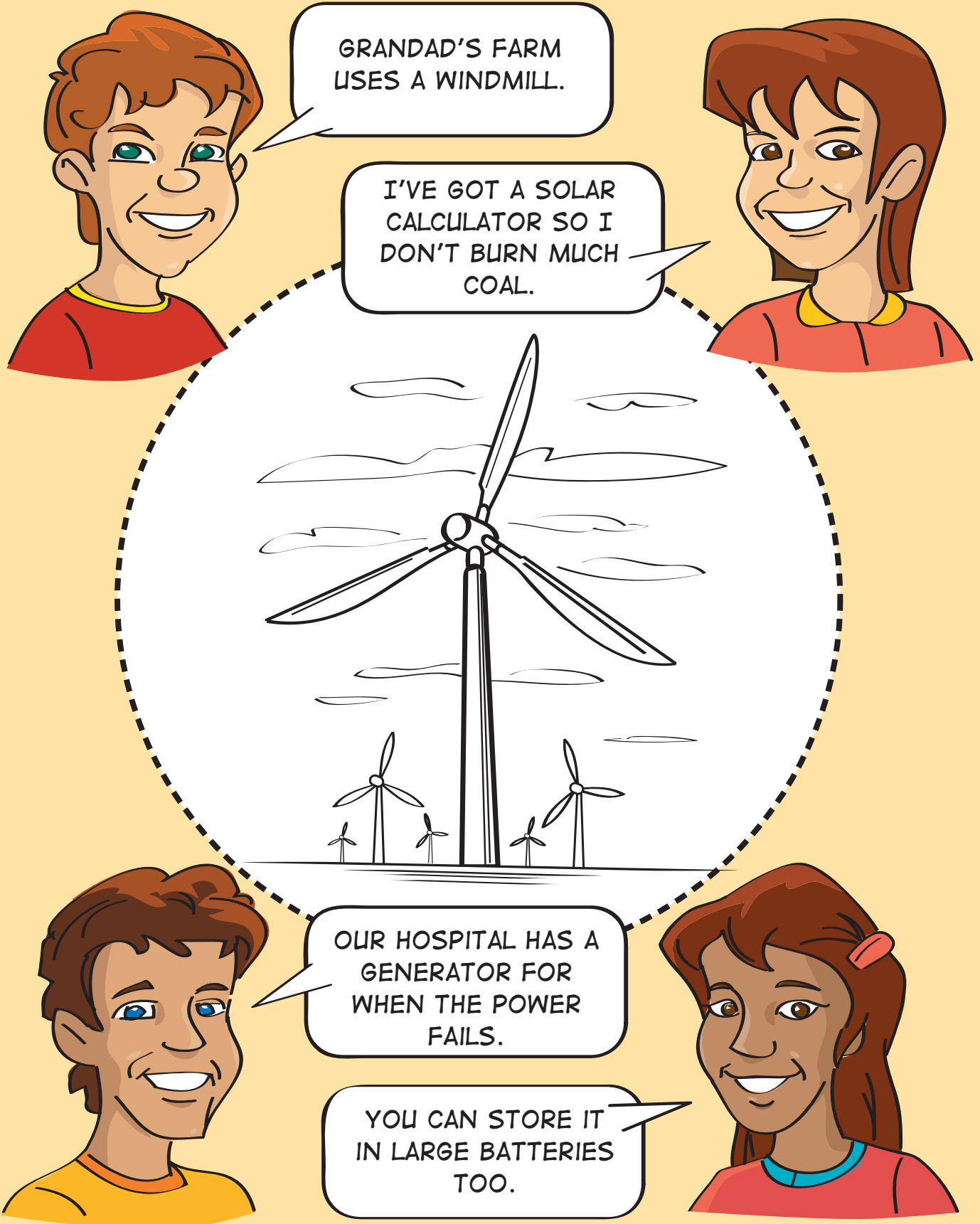


Do we have to burn coal to make electricity?



What is a global warming?



IT MEANS THE EARTH
IS HEATING UP.



ISN'T IT ABOUT
POLLUTION?



IT'S ABOUT ICE
MELTING, ISN'T IT?



IT'S ABOUT DROUGHT
AND RISING SEAS.

What causes global warming?



SOMEONE SAID AL GORE KNOWS THE ANSWERS.



IT'S CAUSED BY CARBON DIOXIDE AND YUCKY THINGS.



I THINK IT'S CAUSED BY US CHANGING THE PLANET TOO MUCH.



ISN'T IT CAUSED BY INDONESIAN FARMERS BURNING TREES?

What is a scientist?



PHOTOGRAPHERS
CAN'T BE SCIENTISTS.

SCIENTISTS
SOMETIMES MEASURE
THINGS.



SCIENTISTS DISCOVER
NEW THINGS.

THEY COULD ALL BE
SCIENTISTS



What is a food chain?

ISN'T IT WHEN LARGE
ANIMALS EAT
SMALLER ANIMALS?

PLANTS CAN'T EAT
ANIMALS THOUGH
SO THEY AREN'T PART
OF A CHAIN



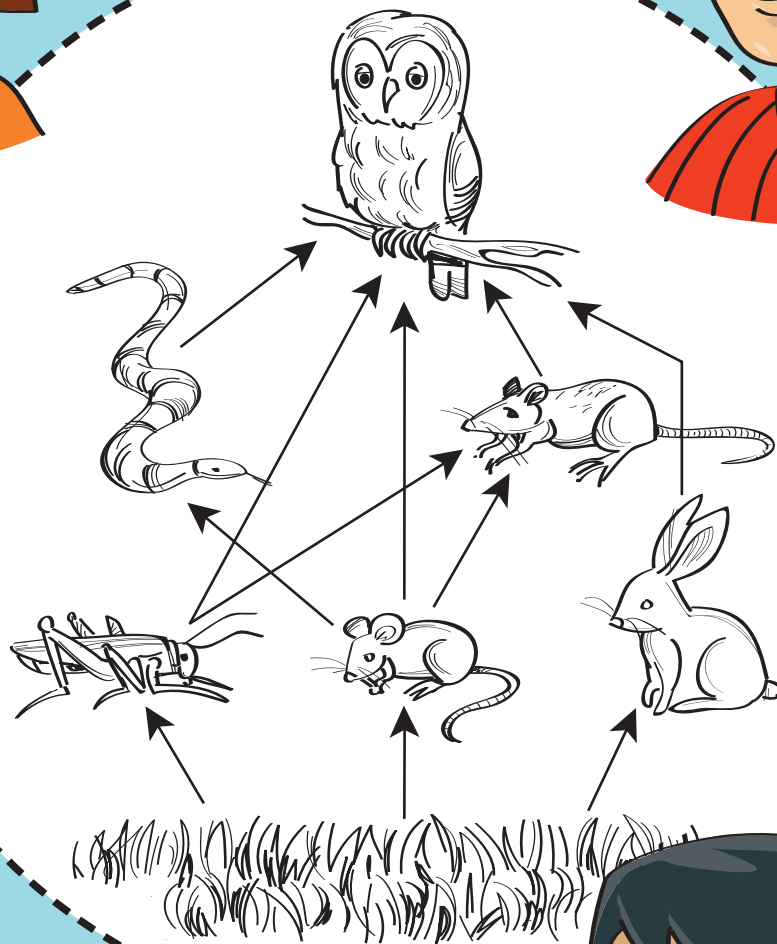
IT'S LIKE BIG THINGS
EATING SMALLER
THINGS, LIKE CATS
EATING MICE

BUT WHAT ABOUT
PLANTS? ARE THEY
PART OF A CHAIN?

What is a food web?

ISN'T IT WHEN LARGE ANIMALS EAT SMALLER ANIMALS?

IF YOU REMOVE ONE PART OF A WEB EVERYTHING ELSE SUFFERS.



FOOD CHAINS ARE IN DIFFERENT PLACES, LIKE THE RIVER AND BUSH.

How do indigenous people find food?



THEY STUDY ANIMAL
BEHAVIOURS.

THE ELDERS PASS ON
STORIES OF HOW TO
FIND FOOD.



INDIGENOUS PEOPLE
FOLLOW THE
SEASONS FOR FOOD.

THEY LOOK FOR
CLUES IN THE
ENVIRONMENT.

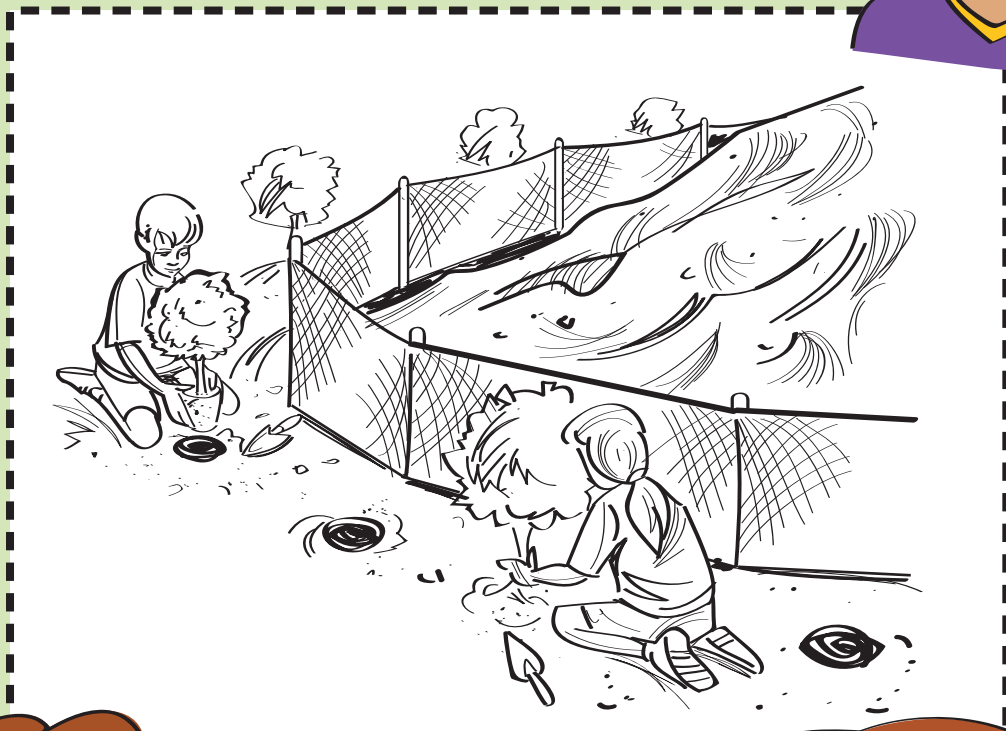


What makes a sustainable environment?



BY NOT INTERFERING
WITH NATURE.

LIVING WITH THE
LAND, PLANTS AND
ANIMALS SENSIBLY.



SOME PEOPLE BURN
THE BUSH TO MAKE
THE LAND
PRODUCTIVE.

IT HELPS IF WE KEEP
NATURE IN BALANCE.



What do living things need to survive?



THEY ALL NEED FOOD
AND WATER.



IT HELPS TO HAVE
SHELTER TOO.



ALL LIVING THINGS
NEED ENERGY.



IS IT THE SAME FOR
PLANTS? THEY'RE
LIVING TOO!

Where did all the dinosaurs go?



THEY WERE KILLED BY HUMANS.



I THINK IT WAS A MASSIVE ROCK FROM SPACE.



I THINK THEY ATE EACH OTHER.



DIDN'T GLOBAL WARMING KILL THEM?

What does extinct mean?



ALL GONE. NEVER TO
BE SEEN AGAIN,
EXCEPT IN A MUSEUM
MAYBE.



FINAL. DEAD. ZAPPED.



CAN ONLY ANIMALS
BE EXTINCT?



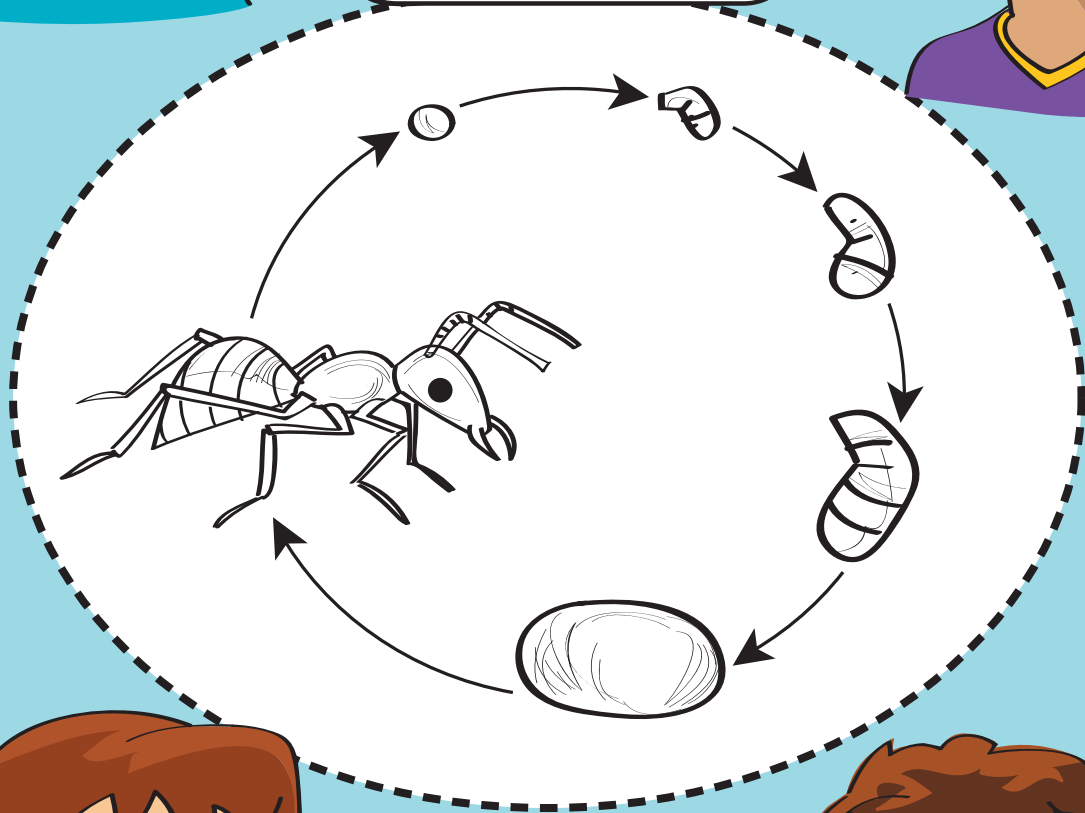
LIKE THE
TASMANIAN TIGER
AND DODO BIRD?

What is a life cycle?



IT'S WHEN ANIMALS
CHANGE, AS THEY
GROW OLDER.

LIKE WHEN A BABY
JOEY BECOMES A
KANGAROO.



OR WHEN A TADPOLE
BECOMES A FROG.

IS IT THE SAME
WITH PLANTS?

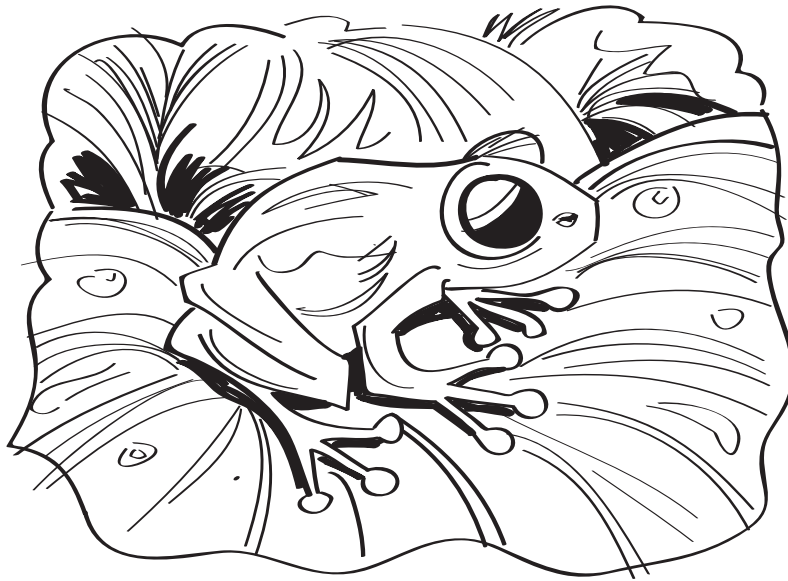


Why do frogs live near water?



THEY NEED WATER TO
LAY THEIR EGGS IN.

I HEARD THEY NEED
WATER TO KEEP THEIR
SKIN MOIST.



MOST OF THEIR FOOD
LIVES NEAR WATER.

SOME FROGS CAN LIVE
IN DRY MUD FOR YEARS
UNTIL IT RAINS.



What do we use plants for?



WE CAN EAT SOME PLANTS.



SOME PLANTS ARE GOOD AS MEDICINE.



PLANTS CAN BE USED TO FEED OTHER ANIMALS, LIKE HAY.



AREN'T MOST PLANTS JUST WEEDS?

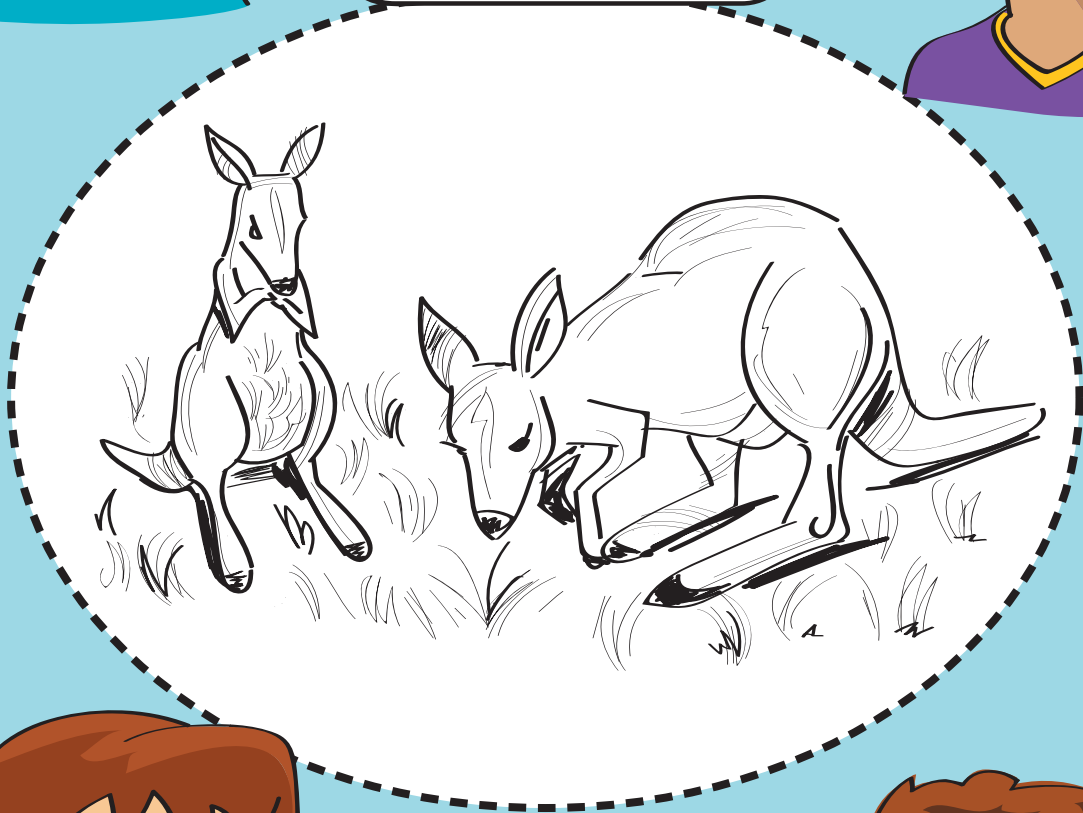
What is a life cycle?



IT'S WHEN ANIMALS
CHANGE, AS THEY
GROW OLDER.



LIKE WHEN A BABY
JOEY BECOMES A
KANGAROO.



OR WHEN A TADPOLE
BECOMES A FROG.



IS IT THE SAME
WITH PLANTS?

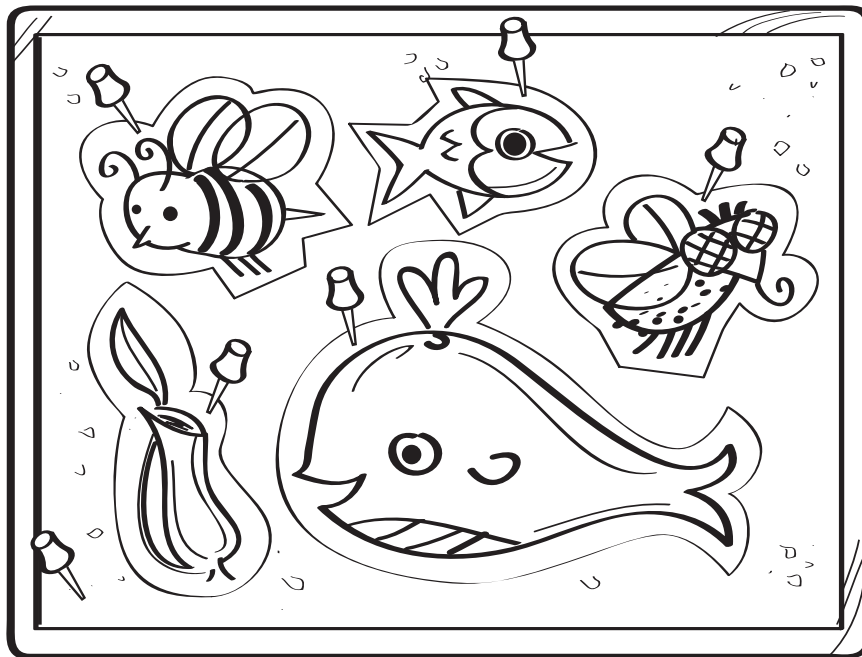
Is it an animal?



THE BEE ISN'T AN ANIMAL.



I DON'T THINK THE WHALE IS.



NO INSECTS ARE ANIMALS.



ARE HUMANS ANIMALS?

Is it a plant?



THE TREE ISN'T.



AND THE PACKET OF SEEDS ISN'T.



SHRUBS AREN'T EITHER.

THE APPLE COMES FROM A PLANT SO MAYBE IT WAS ONCE.



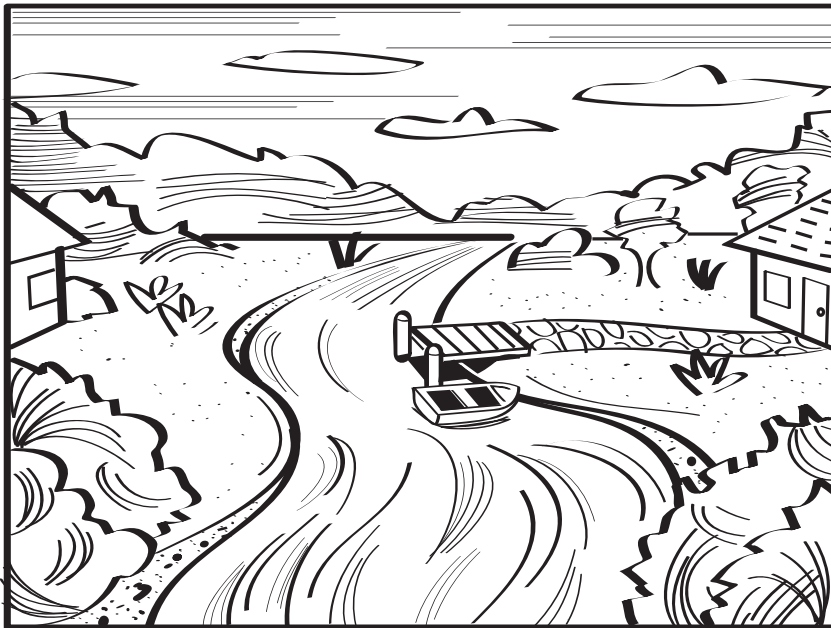
Where do rivers come from?



THEY COME FROM
RAIN AND SNOW IN
THE MOUNTAINS.



WHEN THE CLOUD
SPIRITS CRY, THEIR
TEARS MAKE THE
RIVERS.



WATER FROM THE SEA
MAKES SOME RIVERS.



SOME RIVERS APPEAR
WHEN WE HAVE
FLOODS AND
CYCLONES.

Where do volcanoes come from?



THEY'VE ALWAYS
BEEN THERE.



THEY COME UP
THROUGH CRACKS IN
THE EARTH.



VOLCANOES HAPPEN
WHEN THE GODS ARE
ANGRY.



THEY OFTEN HAPPEN
WITH EARTHQUAKES.

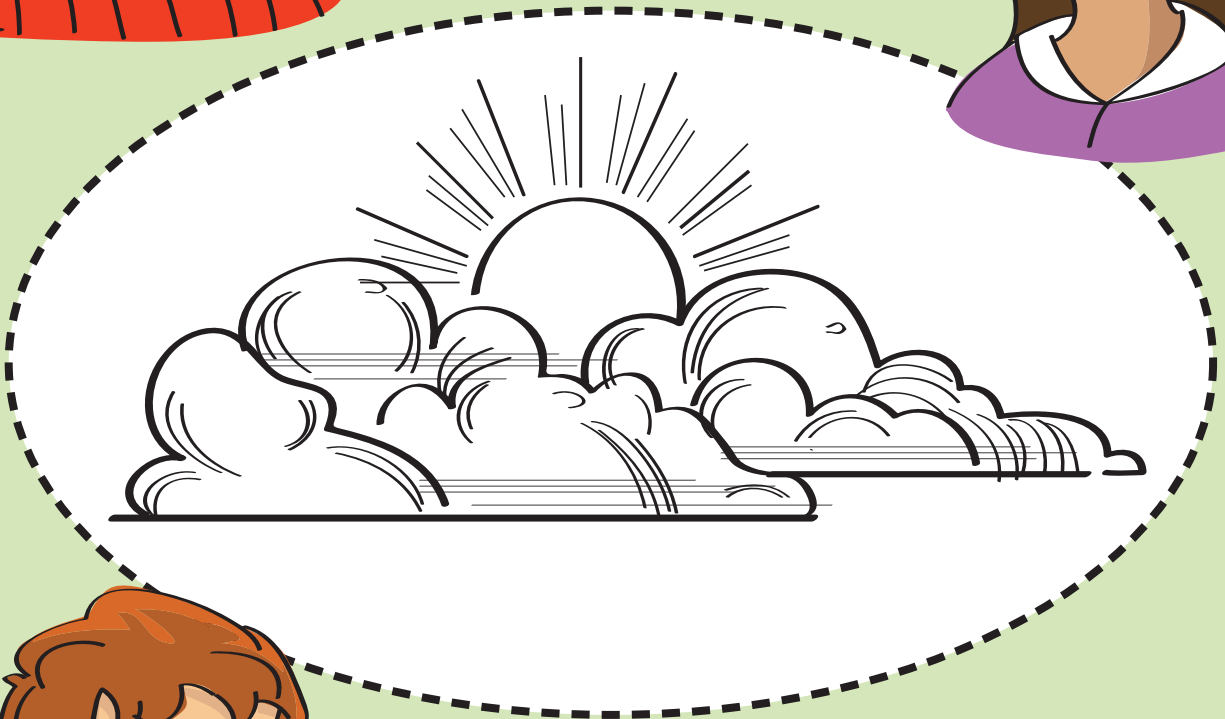
How do clouds form?



CLOUDS APPEAR
WHEN THE SKY SUCKS
WATER FROM THE
LAND AND OCEANS.



CLOUDS HAPPEN
WHEN GASES COLLECT
IN THE SKY.



THE SUN BOILS THE
SEA TO MAKE
CLOUDS.



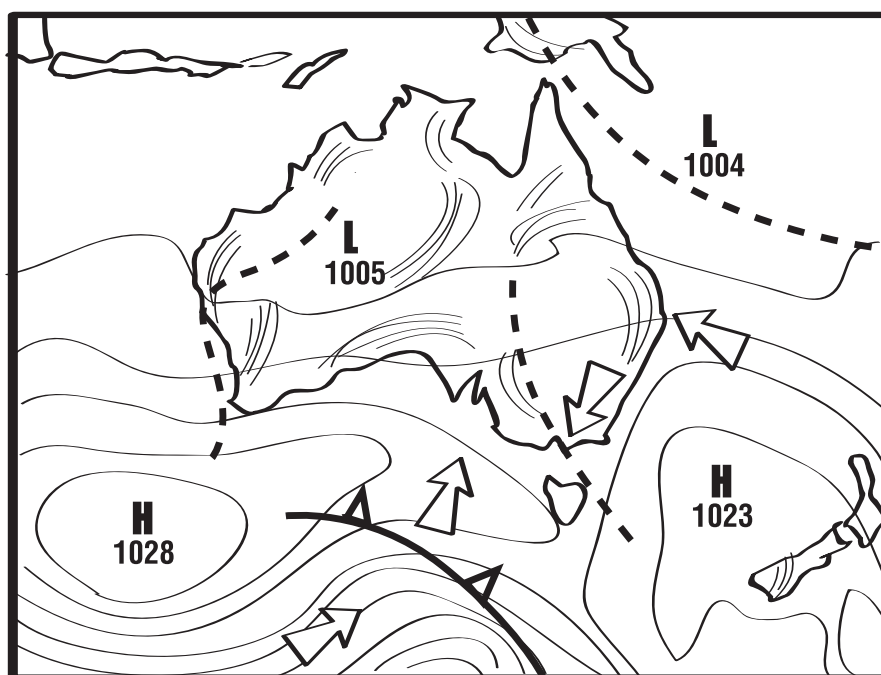
CLOUDS APPEAR
WHEN THE CLOUD
SPIRITS ARE ANGRY.

How do we predict the weather?



IF THE SKY IS BRIGHT
BLUE IT WON'T RAIN.

ANTS IN THE
KITCHEN WORKS
FOR MY MUM.



IT WILL RAIN WHEN
ALL THE BLACK
COCKATOOS START TO
FLY AWAY.

GRASSHOPPERS ARE
AN INDICATOR OF
RAIN.



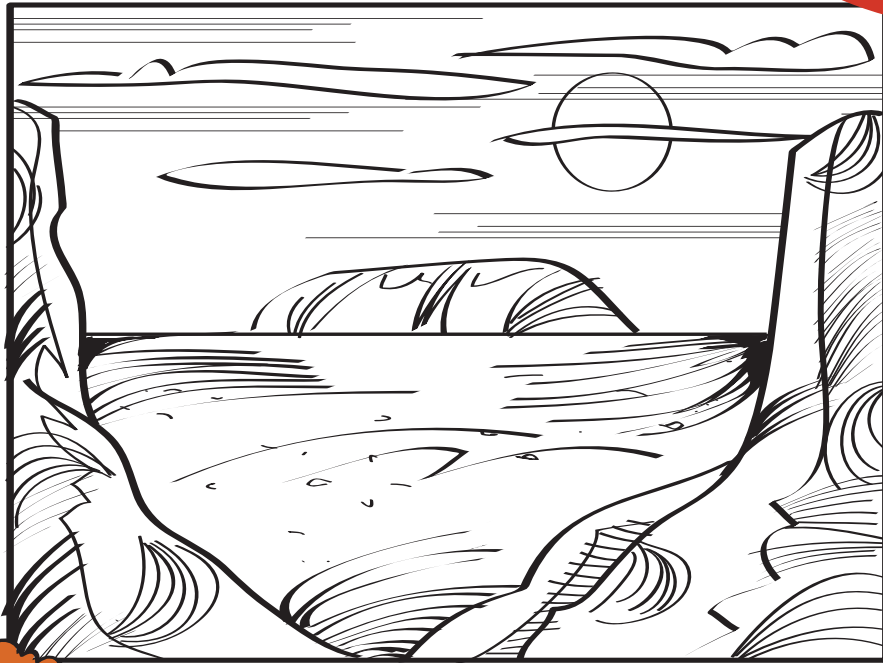
Where do rocks come from?



ROCKS ARE MADE BY
VOLCANOES.



ONLY SOME OF
THEM ARE.



ROCKS WERE MADE
DURING THE
DREAMING.



ROCKS ARE MADE IN
MANY DIFFERENT
WAYS.

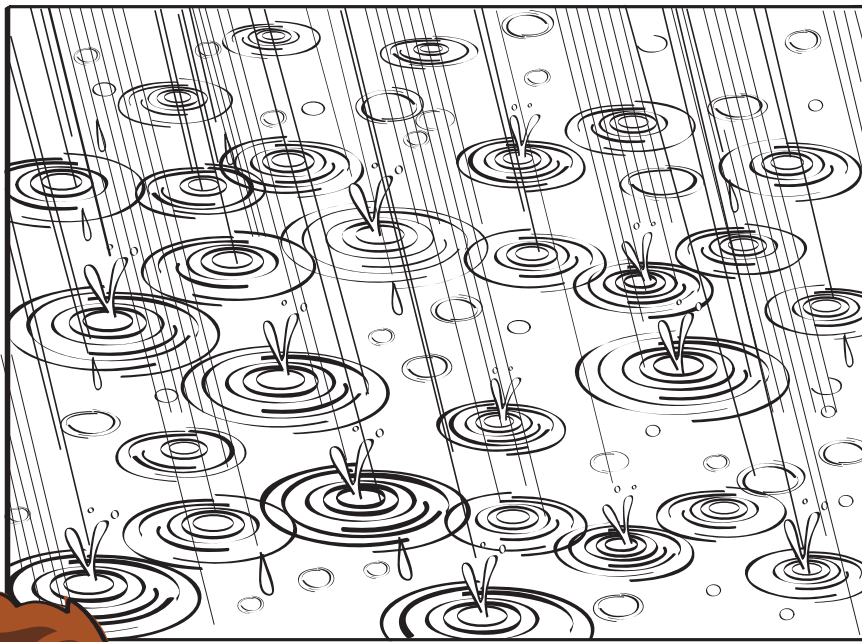
Where does rain come from?



IT COMES FROM
HOLES IN THE
CLOUDS.



IT RAINS WHEN THE
RAIN SPIRITS
ARE SAD.



IT RAINS WHEN DUST
AND WATER BITS IN
THE CLOUDS GET
HEAVY.



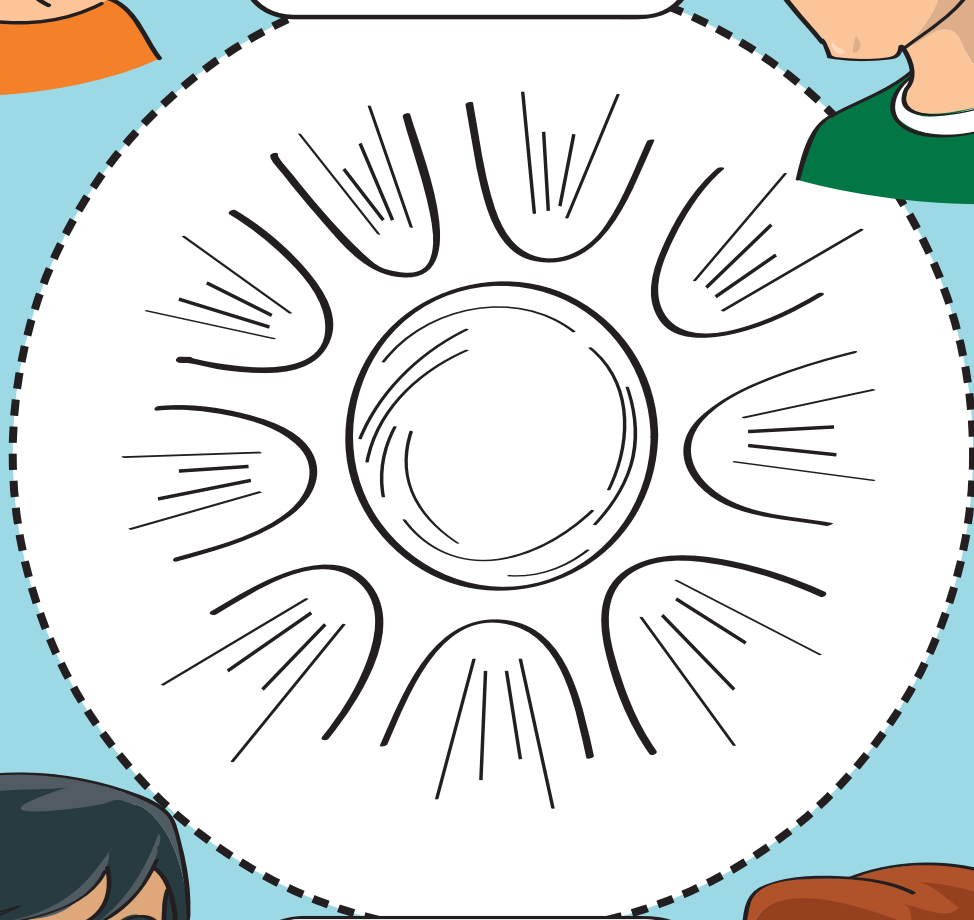
SO WHAT ABOUT
HAIL AND SNOW?

What do we know about the Sun?



IT MOVES AROUND
EARTH ONCE A DAY.

THE SUN DISAPPEARS
AT NIGHT.



IT'S SO BIG IT WILL
NEVER BURN OUT.

THE SUN'S SURFACE
HAS NO FEATURES
THAT WE CAN SEE.



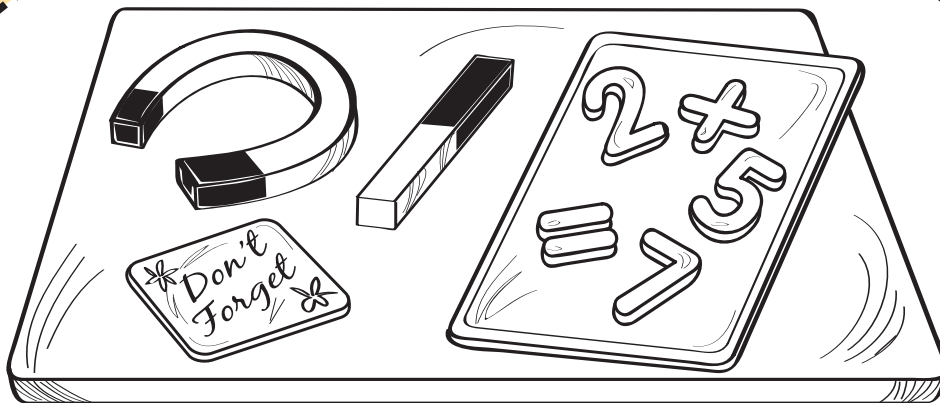
What is a magnet?



MAGNETS ARE MADE
OF METAL.



ONLY IRON CAN BE A
MAGNET.



MAGNETS ATTRACT
ANY METAL.



CAN OTHER METALS
BE MAGNETS?

Why does a boomerang come back?



BECAUSE IT SPINS
LIKE A PROPELLER.



IT HAS SOMETHING
TO DO WITH
AERODYNAMICS.



IT DEPENDS HOW
YOU THROW IT.



DO THEY ALL COME
BACK?



How can I keep my coffee hot?



YOU CAN WRAP IT IN
A TEA TOWEL.



OR PUT IT IN
THE SHADE!



TRY WRAPPING
POLYSTYRENE
AROUND IT!



IT'S SIMPLE, WRAP
IT IN SCRUNCED-UP
NEWSPAPER.

Why did the apple fall from the tree?



BECAUSE IT IS RIPE
AND IT'S HEAVY.



IT FALLS WHEN THE
WIND BLOWS.



THERE IS SOMETHING
PULLING ON IT THAT
IS INVISIBLE.



THEY JUST FALL
'CAUSE THAT'S WHAT
APPLES DO.

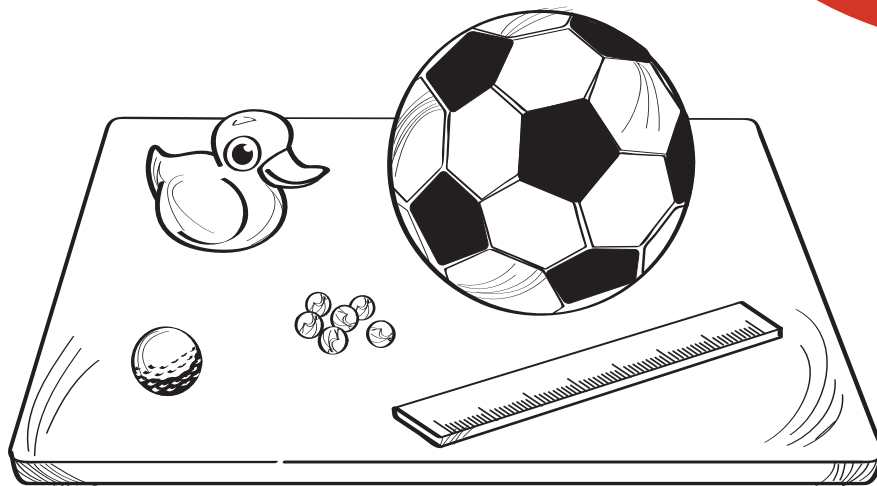
Will it float?



THE BALL WON'T
FLOAT. IT'S TOO BIG.



THE RULER WILL
FLOAT. IT'S LIGHT.



ALL THE METAL
THINGS WILL SINK.
THEY'RE HEAVY.



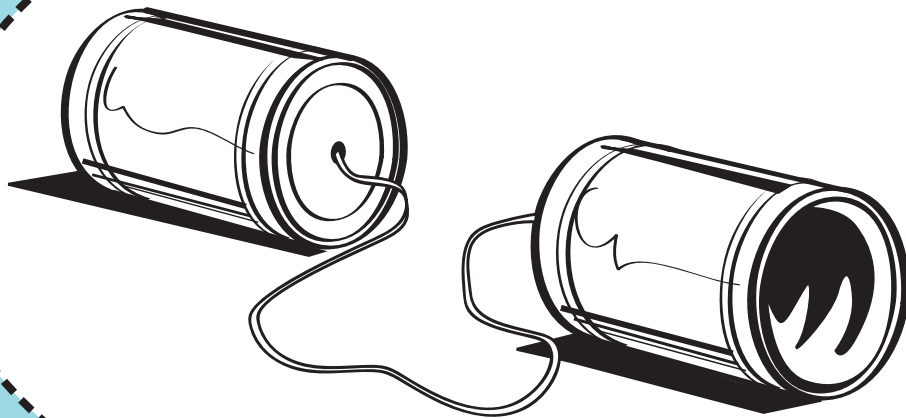
I KNOW HOW TO
MAKE ALUMINIUM FOIL
SINK!

How can I hear better?



USE THICKER STRING!

PULL THE STRING
TIGHTER!



YOU COULD USE
BIGGER TINS!

IT MAKES NO
DIFFERENCE
WHAT YOU DO!



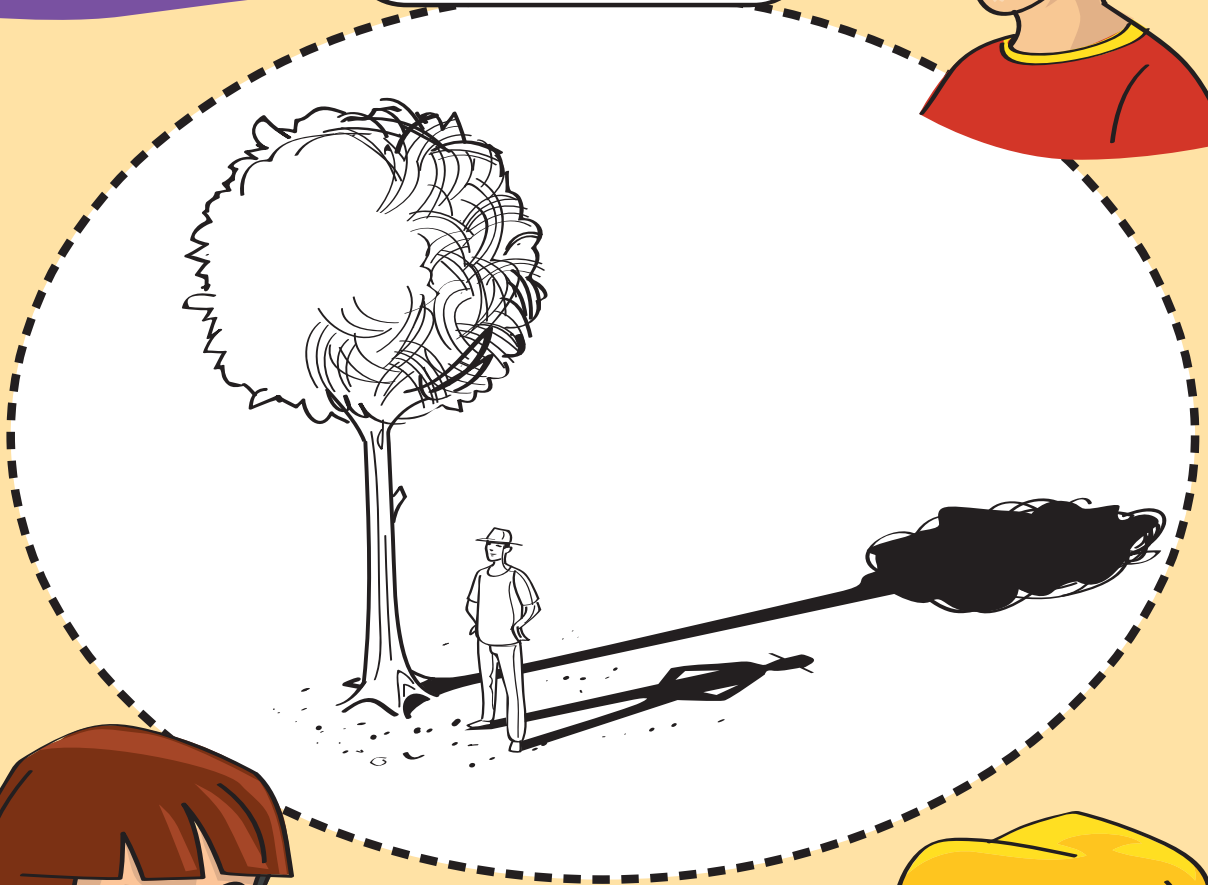
How big is a shadow?



TALL PEOPLE ALWAYS
HAVE THE LONGEST
SHADOW!



MY SHADOW CAN
SOMETIMES BE LONG
AND I'M SHORT.



IT DEPENDS WHERE
THE SUN IS.



CAN YOU HAVE
SHADOWS AT NIGHT?

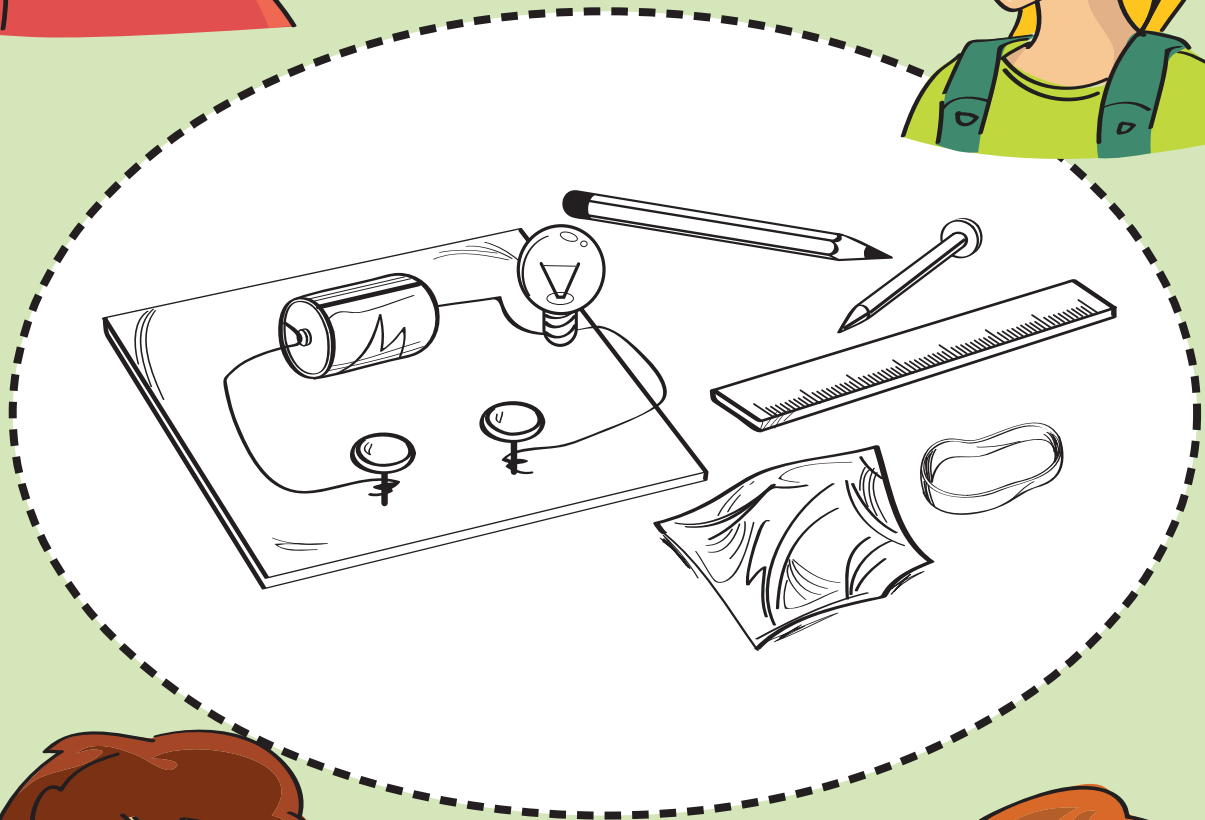
Is it a conductor?



I THINK THE NAIL
WILL MAKE THE BULB
LIGHT.



THE
RUBBER BAND
WON'T WORK.



THE ALUMINIUM FOIL
WON'T EITHER.



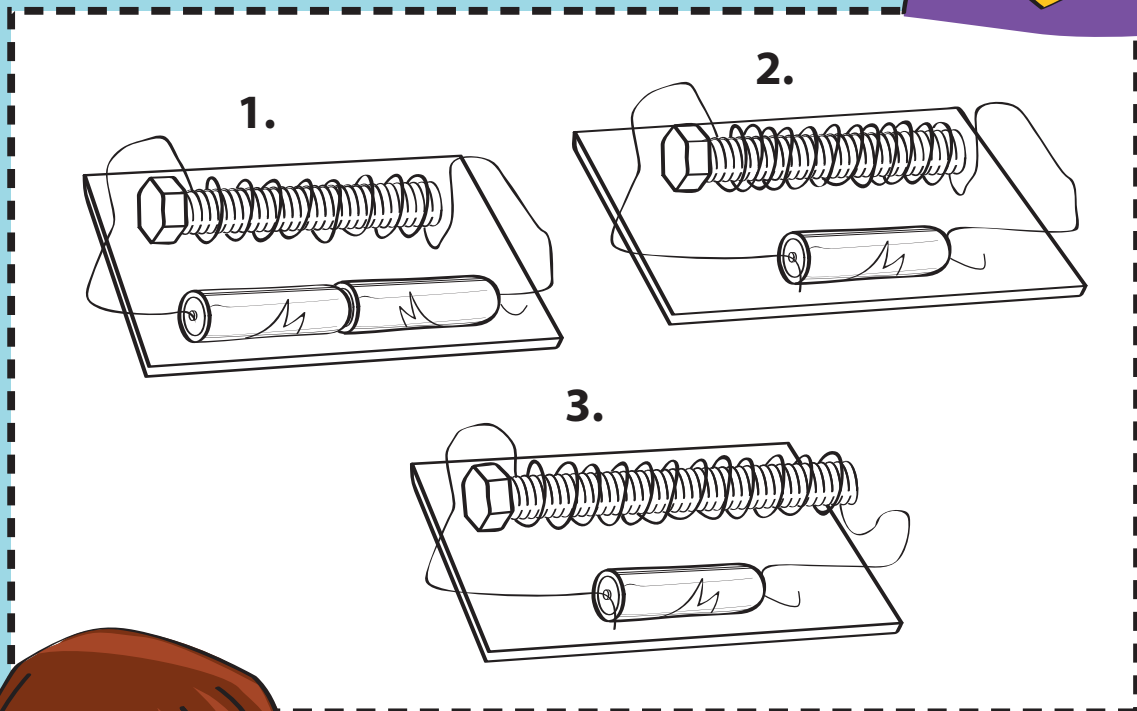
ONLY IRON AND STEEL
CONDUCT ELECTRICITY.

Which one is strongest?



I THINK NUMBER 2. IS STRONGER BECAUSE IT HAS MORE WIRE TURNS.

NUMBER 1. HAS MORE BATTERIES THOUGH.



BUT NUMBER 3. HAS A LARGER BOLT IN THE MIDDLE OF THE COIL.

LET'S FIND OUT THEN?



Why is the outside of my glass wet?



THE ICE MELTS AND
THE WATER GETS OUT
THROUGH HOLES IN
THE GLASS.

IT MOVES UP THE
INSIDE OF THE JAR
AND FALLS OVER
THE EDGE.



IT WAS THERE ALL
THE TIME.

IT APPEARS WHEN
THE ICE CUBES ARE
THERE.



Where does the sugar go?



IT MELTS INTO THE
TEA OR COFFEE.



CAN I GET THE
SUGAR BACK?



YOU MIGHT IF YOU
STRAINED IT.



IT DISAPPEARS
QUICKER IF YOU STIR
IT FAST.

How can I stop the ice from melting?



PUT IT BACK IN THE FRIDGE.



STAND IT IN THE SHADE.



MY MUM WRAPS THINGS IN NEWSPAPER TO KEEP THEM COOL.



DAD WRAPS HIS FISH BAIT IN PAPER TO KEEP IT FRESH.

Where did the water go?



IT SOAKED INTO
THE SAUCER



THE WATER JUST
DISAPPEARS.



IT MELTS INTO
THE AIR.

IT TAKES A WHILE
TO GO AWAY.



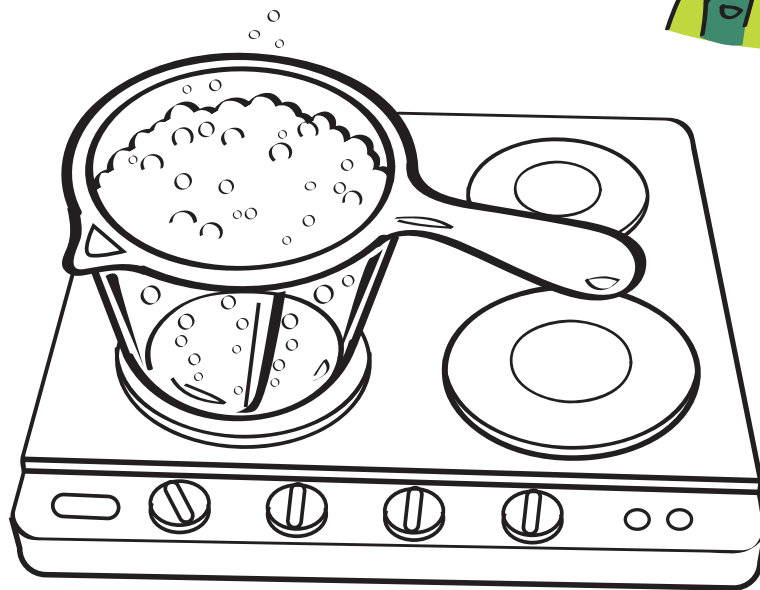
What are those bubbles made of?



IT'S HOT AIR IN THE WATER.



IT'S OXYGEN AND HYDROGEN FROM THE HOT WATER.



WATER HAS AIR DISSOLVED IN IT. THAT'S WHAT IT IS.

I THINK IT'S WATER DROPLETS.



Is there any gas in the jar?



IF I CAN'T SEE IT,
IT'S NOT A GAS.



GASES DON'T HAVE
ANY MASS.



THERE'S AIR IN THE
JAR, IS IT A GAS?

SOME GASES ARE
INVISIBLE THOUGH!
YOU CAN SMELL THEM.



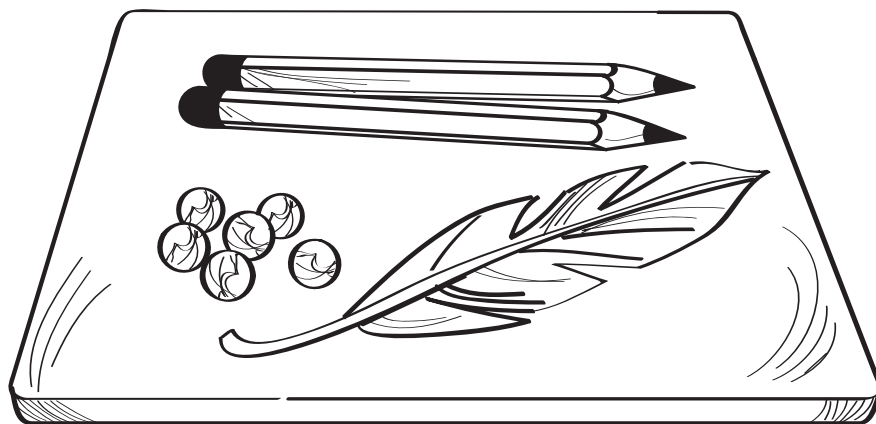
Is it a solid?



THE FEATHER ISN'T.
IT FLOATS IN
THE AIR.



THE PENCIL ISN'T. IT
FLOATS IN WATER.



MARBLES AREN'T.
THEY MOVE QUICKLY.



THEY'RE ALL
SOLIDS!

Is it a liquid?



THE SAND IS BECAUSE
IT FITS INTO THE
SHAPE OF THE JAR.



HONEY IS A SORT
OF LIQUID!



SUDSO WASHING UP
LIQUID IS.

SUGAR IS BECAUSE I
CAN POUR IT LIKE
OTHER LIQUIDS.

